



# GLA

Price List As of 18/11/2016

## Mercedes-Benz

The best or nothing.



# Welcome

At Mercedes-Benz we appreciate the importance of detail. Over the following pages you'll find model prices and a breakdown of standard and optional equipment, as well as details of the attractive finance offers and benefits that are available to every Mercedes-Benz driver.

We have highlighted some of the best styling features both inside and out, some of the new technology features and some body styling options which all combine to give you a unique driving experience. To experience a full listing of what is available; please speak directly to your local Mercedes-Benz Dealer.

Of course, some things have to be experienced to be truly appreciated, such as the qualities that set a Mercedes-Benz apart, which is why we'd like to invite you for a test drive at your local Mercedes-Benz Dealership. Discover the location and the contact details of your local Mercedes-Benz Dealership at **[www.mercedes-benz.ie](http://www.mercedes-benz.ie)**

# Contents

Model prices - petrol	4	Urban exterior equipment	11	Technical data	18 – 19
Model prices - diesel	5	AMG Line interior equipment	12	Upholstery and trim	20 – 21
Star Finance PCP	6	AMG Line exterior equipment	13	Paint	22
Style interior equipment	8	Night pack	14	Mercedes me	23
Style exterior equipment	9	Optional equipment	15		
Urban interior equipment	10	Wheels	17		

# Model prices

The below prices include a 10% price reduction for a limited period only.

## Petrol

Model Description	Wheel Size	CO2	Band %	Tax Band	Road Tax	CC	BHP	Retail Price €
GLA 180 STYLE	17"	131 - 140	19%	B2	€280.00	1595	122	€29,540.00
GLA 180 STYLE A/T	17"	131 - 140	19%	B2	€280.00	1595	122	€31,805.00
GLA 180 URBAN	18"	131 - 140	19%	B2	€280.00	1595	122	€30,465.00
GLA 180 URBAN A/T	18"	131 - 140	19%	B2	€280.00	1595	122	€32,715.00
GLA 180 AMG SPORT	18"	131 - 140	19%	B2	€280.00	1595	122	€32,325.00
GLA 180 AMG SPORT A/T	18"	131 - 140	19%	B2	€280.00	1595	122	€34,540.00
GLA 200 STYLE	17"	131 - 140	19%	B2	€280.00	1595	156	€33,295.00
GLA 200 STYLE A/T	17"	131 - 140	19%	B2	€280.00	1595	156	€35,570.00
GLA 200 URBAN	18"	131 - 140	19%	B2	€280.00	1595	156	€34,280.00
GLA 200 URBAN A/T	18"	131 - 140	19%	B2	€280.00	1595	156	€36,530.00
GLA 200 AMG SPORT	18"	131 - 140	19%	B2	€280.00	1595	156	€36,250.00
GLA 200 AMG SPORT A/T	18"	131 - 140	19%	B2	€280.00	1595	156	€38,460.00
GLA 250 STYLE	17"	141 - 155	23%	C	€390.00	1991	211	€37,255.00
GLA 250 STYLE A/T	17"	131 - 140	19%	B2	€280.00	1991	211	€37,775.00
GLA 250 URBAN	18"	141 - 155	23%	C	€390.00	1991	211	€38,240.00
GLA 250 URBAN A/T	18"	131 - 140	19%	B2	€280.00	1991	211	€38,695.00
GLA 250 AMG SPORT	18"	141 - 155	23%	C	€390.00	1991	211	€40,205.00
GLA 250 AMG SPORT A/T	18"	131 - 140	19%	B2	€280.00	1991	211	€40,705.00
GLA 250 STYLE 4MATIC	17"	141 - 155	23%	C	€390.00	1991	211	€41,380.00
GLA 250 URBAN 4MATIC	18"	141 - 155	23%	C	€390.00	1991	211	€42,355.00
GLA 250 AMG SPORT 4MATIC	18"	141 - 155	23%	C	€390.00	1991	211	€44,300.00
GLA 45 AMG 4MATIC	19"	171 - 190	30%	E	€750.00	1991	381	€64,765.00

# Model prices

The below prices include a 10% price reduction for a limited period only.

## Diesel

Model Description	Wheel Size	C02	Band %	Tax Band	Road Tax	CC	BHP	Retail Price €
GLA 180 D STYLE	17"	101 - 110	16%	A3	€190.00	1461	109	€31,545.00
GLA 180 D STYLE A/T	17"	101 - 110	16%	A3	€190.00	1461	109	€33,795.00
GLA 180 D URBAN	18"	101 - 110	16%	A3	€190.00	1461	109	€32,445.00
GLA 180 D URBAN A/T	18"	101 - 110	16%	A3	€190.00	1461	109	€34,680.00
GLA 180 D AMG SPORT	18"	101 - 110	16%	A3	€190.00	1461	109	€34,250.00
GLA 180 D AMG SPORT A/T	18"	101 - 110	16%	A3	€190.00	1461	109	€36,460.00
GLA 200 D STYLE	17"	101 - 110	16%	A3	€190.00	2143	136	€32,710.00
GLA 200 D STYLE A/T	17"	101 - 110	16%	A3	€190.00	2143	136	€34,940.00
GLA 200 D URBAN	18"	101 - 110	16%	A3	€190.00	2143	136	€33,600.00
GLA 200 D URBAN A/T	18"	101 - 110	16%	A3	€190.00	2143	136	€35,820.00
GLA 200 D AMG SPORT	18"	101 - 110	16%	A3	€190.00	2143	136	€35,375.00
GLA 200 D AMG SPORT A/T	18"	101 - 110	16%	A3	€190.00	2143	136	€37,565.00
GLA 220 D STYLE A/T	17"	101 - 110	16%	A3	€190.00	2143	177	€37,475.00
GLA 220 D URBAN A/T	18"	101 - 110	16%	A3	€190.00	2143	177	€38,365.00
GLA 220 D AMG SPORT A/T	18"	101 - 110	16%	A3	€190.00	2143	177	€40,150.00
GLA 200 D STYLE 4MATIC	17"	121 - 130	18%	B1	€270.00	2143	136	€37,755.00
GLA 200 D URBAN 4MATIC	18"	121 - 130	18%	B1	€270.00	2143	136	€38,665.00
GLA 200 D AMG SPORT 4MATIC	18"	121 - 130	18%	B1	€270.00	2143	136	€40,485.00
GLA 220 D STYLE 4MATIC	17"	121 - 130	18%	B1	€270.00	2143	177	€40,920.00
GLA 220 D URBAN 4MATIC	18"	121 - 130	18%	B1	€270.00	2143	177	€41,835.00
GLA 220 CDI AMG SPORT 4MATIC	18"	121 - 130	18%	B1	€270.00	2143	177	€43,680.00

# Star Finance PCP

You said you’d drive a Mercedes-Benz one day. One day is now with Star Finance PCP.

Speak to your dealer to discover just how easy it can be to upgrade from the ordinary to the extraordinary.

Our new Personal Contract Plan guarantees the minimum future value (GMFV) of your Mercedes-Benz.

- Select your Mercedes-Benz model, pay your deposit and in 37 months either:
  - Trade-in for a brand new model
  - Acquire your model by paying the outstanding balance
  - Return the car and walk away (T&C’s apply)

The below prices include a 10% price reduction for a limited period only.

**Mercedes-Benz GLA Star Finance PCP Example –**  
(includes delivery and a 3 year service plan)

Purchase Price†:	€30,540.00
Deposit/Trade in:	€9,162.00
Finance Amount:	€21,378.00
36 Monthly Payments of:	€323.97
GMFV†† (Optional Final Payment)	€11,605.20
Term:	37 months
Total Cost of Credit:	€1,953.61
APR %*	3.9%

## Terms and Conditions.

† Includes delivery & related charges. Model is shown for illustrative purposes only. †† The Guaranteed Minimum Future Value (GMFV) is payable if you renew or retain the vehicle at the end of the agreement. Further charges may be applied by your Mercedes-Benz Dealer subject to kilometre limits/condition of the vehicle.\*Lending criteria and conditions apply. Fixed APR (Annual Percentage Rate) 3.9% which is inclusive of a documentation fee of €63.49. To qualify for this Finance Offer; a minimum deposit of 10% is required. Rate quoted is correct at 18th November 2016 and subject to change. Offer available on all new GLA 180 petrol manual Style models registered from 18th November 2016 until 28th February 2017 at authorised dealers. This is a Consumer Hire Purchase agreement provided by Bank of Ireland t/a Bank of Ireland Finance. CO2 range: 133 – 138 g/km and 5.7– 6.0 l/100km





# GLA

## Style interior equipment

12 V socket in rear
2-tube instrument cluster with silver-coloured back plate and red needles
3-spoke multifunction steering wheel in leather with 12 control buttons
Air conditioning
Air outlets with surround and cruciform nozzle in silver chrome
Armrest on centre console with fore-and-aft adjustment and contrasting topstitching
Carbon structure trim
Comfort seats upholstered in ARTICO man-made leather / fabric
Cover on stowage compartment in the centre console
Door armrests with silver-chrome trim and contrasting topstitching
Door centre panels in Dourados fabric
High-gloss black light switch with ring in silver chrome
Multifunction holder in the centre console
Seat Comfort package
Shift lever in leather with silver-chrome trim





# GLA

## Style exterior equipment

---

17" 5-twin-spoke light-alloy wheels painted in vanadium silver

---

Aluminium roof rails in high-gloss black

---

Beltline trim strip in chrome

---

Load sill guard in chrome

---

Off road comfort suspension

---

Radiator grille with 2 silver-painted louvres and chrome inserts

---

Tyrefit

---



# GLA

## Urban interior equipment

12 V socket in rear
2-tube instrument cluster with silver-coloured back plate and red needles
3-spoke multifunction steering wheel in leather
Air conditioning
Air outlets with surround and cruciform nozzle in silver chrome
Armrest on centre console with fore-and-aft adjustment and contrasting topstitching
Cover on stowage compartment in the centre console
Door armrest with silver chrome trim and contrasting topstitching
Light switch in high-gloss black with ring in silver chrome
Multifunction holder in the centre console
Seat Comfort package
Shift lever in perforated leather with contrasting topstitching and silver chrome trim elements
Sports seats upholstered in ARTICO man-made leather / fabric
Wave look trim / Wave look trim in Anthracite



# GLA

## Urban exterior equipment

---

18" 5-twin-spoke light-alloy wheels painted in vanadium silver

---

Active brake assist

---

Aluminium roof rails

---

Beltline trim strip in chrome

---

Front and rear bumpers with simulated under guard in dark chrome

---

Load sill guard in chrome

---

Off road comfort suspension

---

Radiator grille with 2 silver-painted louvres and chrome inserts

---

Twin-pipe exhaust system with chrome-plated tailpipe trim elements integrated into the bumper

---

Tyrefit

---



# GLA

## AMG Line interior equipment

12 V socket in the rear
2-tube instrument cluster with silver-coloured back plate and red needles
3-spoke multifunction sports steering wheel in leather
Air outlets with surround and cruciform nozzle in silver chrome
Armrest on centre console with fore/aft adjustment and contrasting red topstitching
Black roof liner
Brushed stainless-steel sports pedals with rubber studs
Cord floor mats with edging in black and red contrasting topstitching as well as AMG lettering
Cover on stowage compartment in centre console
Door armrests with silver chrome trim and contrasting red topstitching
Door centre panels in DINAMICA microfiber
DYNAMIC SELECT
High-gloss black light switch with surround in silver chrome
Light aluminium trim with longitudinal grain
Multifunction holder in the centre console

Needle motion when ignition started
Seat Comfort package
Shift lever in perforated leather with contrasting red topstitching and use of silver chrome trim
Sports seats upholstered in ARTICO man-made leather / DINAMICA microfibre



# GLA

## AMG Line exterior equipment

---

1 1/2" lower suspension and Sports Direct-Steer system

---

18" AMG 5-spoke light-alloy wheels painted in titanium grey with a high-sheen finish

---

Aluminium roof rails

---

AMG body styling with inserts in front splitter and side sill panels and rear apron trim in matt titanium grey

---

Beltline trim strips in chrome

---

Front brake callipers with Mercedes-Benz lettering

---

Load sill guard in chrome

---

Perforated front brake discs

---

Radiator grille with 2 silver-painted louvres and chrome inserts

---

Twin-pipe exhaust system with chrome-plated tailpipe trim elements integrated into the bumper

---





# GLA

## Night Pack from €638\*

18” 5-twin-spoke light-alloy wheels painted in black and with a high-sheen finish
19” AMG 5-spoke light-alloy wheels painted in black and with a high-sheen finish (AMG Line)
Aluminium roof rails in high-gloss black
AMG body styling with inserts in front splitter and side sill panels as well as rear apron trim in high-gloss black (AMG Line)
Dark-tinted heat-insulating glass from B-pillar onwards
Exterior mirror housings painted in black
Front and rear bumpers with simulated under guard in high-gloss black
Radiator grille with two louvres in high-gloss black and chrome inserts
Waistline trim strips in high-gloss black



\* Price subject to model specification.

# GLA

## Optional equipment From\*

Adaptive highbeam assist	€182
Ambient lighting	€219
Anti theft protection package	€747
ARTICO man-made leather	€237
Automatic panoramic sliding sunroof	€2,171
Bi-xenon headlamps	€1,542
COMAND online	€4,942
Cruise control	€456
Driver's seat, electrically adjustable with memory function	€630
Dynamic select	€145
Exclusive Package	€2,399
Front seat left, electrically adjustable with memory switch	€519
Garmin® MAP PILOT	€912
Heated front seats	€530
Heat insulating dark tinted glass	€493
Intelligent light system	€2,553
KEYLESS GO starting function	€274
KEYLESS-GO	€1,003

Light and sight package	€530
Metallic paint	€1,077
Mirror package	€565
Parking pilot	€1,231
Remote Online	€274
Reversing camera	€610
Seat comfort package	€282
Smartphone integration package	€547
Stowage space package	€274
Trailer coupling with ESP stabilisation	€1,442



\* Price subject to model specification.



# Wheels

17" 5-twin-spoke light-alloy wheels - R48 - Style wheel



18" 5-twin-spoke light-alloy wheels - R31 - Urban wheel



18" AMG 5-spoke light-alloy wheels - 633 - AMG Line wheel



18" AMG 5-twin-spoke light-alloy wheels - 01R - Night Pack wheel



19" AMG 5-twin-spoke light-alloy wheels - 655 - AMG Line Night Pack wheel



# Technical data

No. of cylinders/arrangement
Total displacement in cc
Rated output <sup>1</sup> in kW (hp) at rpm
Rated torque <sup>1</sup> in Nm at rpm
Transmission [automatic transmission]
Acceleration from 0 to 100 km/h in s [automatic transmission]
Top speed, approx. in km/h [automatic transmission]
Tyre size, front
Tyre size, rear
Fuel
Fuel consumption <sup>2</sup> in l/100 km
Urban [automatic transmission]
Extra-urban [automatic transmission]
Combined [automatic transmission]
CO <sub>2</sub> emissions <sup>2</sup> in g/km, combined [automatic transmission]
Emission class <sup>3</sup> /efficiency class <sup>4</sup> [automatic transmission]
Tank capacity, of which reserve, approx. in l
Boot capacity
Turning circle diameter in m
Kerb weight <sup>5</sup> in kg [automatic transmission]
Perm. GVW in kg [automatic transmission]

The best for the engine:  
Mercedes-Benz genuine engine oils.

## DIESEL ENGINES

GLA 180 d	GLA 200 d	GLA 200 d 4MATIC	GLA 220 d	GLA 220 d 4MATIC
4/in-line	4/in-line	4/in-line	4/in-line	4/in-line
1461	2143	2143	2143	2143
80 (109)/4000	100 (136)/3200-4000	100 (136)/3400-4400	130 (177)/3600-3800	130 (177)/3600-3800
260/1750-2500	300/1400-3000	300/1400-3000	350/1400-3400	350/1400-3400
6-speed, manual [7G-DCT]	6-speed, manual [7G-DCT]	- [7G-DCT]	- [7G-DCT]	- [7G-DCT]
11.9 [11.9]	9.5 [9.1]	- [9.1]	- [7.7]	- [7.7]
190 [190]	205 [205]	- [200]	- [223]	- [218]
215/60 R 17	215/60 R 17	215/60 R 17	215/60 R 17	215/60 R 17
215/60 R 17	215/60 R 17	215/60 R 17	215/60 R 17	215/60 R 17
Diesel	Diesel	Diesel	Diesel	Diesel
4.8-4.7 [4.7-4.5]	5.4 [5.2-5.0]	- [5.9-5.8]	- [5.2-5.0]	- [5.9-5.8]
4.0-3.6 [3.8-3.6]	3.8-3.5 [3.9-3.7]	- [4.4-4.3]	- [3.9-3.7]	- [4.4-4.3]
4.3-4.0 [4.1-3.9]	4.4-4.2 [4.4-4.2]	- [5.0-4.8]	- [4.4-4.2]	- [5.0-4.8]
113-105 [109-103]	115-110 [115-108]	- [130-127]	- [115-110]	- [130-127]
Euro 6/A [Euro 6/A+]	Euro 6/A [Euro 6/A+]	- [Euro 6/A]	- [Euro 6/A]	- [Euro 6/A]
50/6.0	50/6.0	56/6.0	50/6.0	56/6.0
421-1235	421-1235	421-1235	421-1235	421-1235
11.84	11.84	11.84	11.84	11.84
1440 [1470]	1505 [1535]	- [1595]	- [1535]	- [1595]
1960 [1960]	2020 [2020]	- [2075]	- [2020]	- [2075]

<sup>1</sup> Details of rated power and rated torque in accordance with Directive (EC) No. 595/2009 in the currently applicable version.   <sup>2</sup> The figures shown for the fuel consumption and the CO<sub>2</sub> emissions were obtained in accordance with the prescribed measuring process (§ 2 Nos. 5, 6, 6a Pkw-EnVKV (passenger car energy labelling ordinance) in the currently applicable version). The figures are not based on an individual vehicle and do not constitute part of the product offer; they are provided solely for purposes of comparison between different vehicle models.   <sup>3</sup> Data applicable within the European Union only. Country-specific variations possible.   <sup>4</sup> Determined on the basis of the measured CO<sub>2</sub>



## PETROL ENGINES

	GLA 180	GLA 200	GLA 250	GLA 250 4MATIC	Mercedes-AMG GLA 45 4MATIC
No. of cylinders/arrangement	4/in-line	4/in-line	4/in-line	4/in-line	4/in-line
Total displacement in cc	1595	1595	1991	1991	1991
Rated output <sup>1</sup> in kW (hp) at rpm	90 (122)/5000	115 (156)/5300	155 (211)/5500	155 (211)/5500	280 (381)/6000
Rated torque <sup>1</sup> in Nm at rpm	200/1200–4000	250/1200–4000	350/1200–4000	350/1200–4000	475/2250–5000
Transmission [automatic transmission]	6-speed, manual [7G-DCT]	6-speed, manual [7G-DCT]	6-speed, manual [7G-DCT]	– [7G-DCT]	– [AMG SPEEDSHIFT DCT 7-speed sports transmission]
Acceleration from 0 to 100 km/h in s [automatic transmission]	9.0 [8.7]	8.4 [8.1]	6.7 [6.6]	– [6.6]	– [4.4]
Top speed, approx. in km/h [automatic transmission]	200 [200]	215 [215]	235 [235]	– [230]	– [250]
Tyre size, front	215/60 R 17	215/60 R 17	215/60 R 17	215/60 R 17	235/45 ZR 19
Tyre size, rear	215/60 R 17	215/60 R 17	215/60 R 17	215/60 R 17	235/45 ZR 19
Fuel	Premium petrol	Premium petrol	Premium petrol	Premium petrol	Super Plus petrol
Fuel consumption <sup>2</sup> in l/100 km					
Urban [automatic transmission]	7.8–7.6 [7.4]	7.8–7.7 [7.4]	8.2 [7.9–7.7]	– [8.7–8.6]	– [9.6]
Extra-urban [automatic transmission]	4.9–4.6 [4.9–4.6]	4.9–4.7 [4.9–4.6]	5.1–4.9 [5.0–4.6]	– [5.5–5.3]	– [6.1]
Combined [automatic transmission]	6.0–5.7 [5.8–5.6]	6.0–5.8 [5.8–5.6]	6.2–6.1 [6.0–5.8]	– [6.6–6.5]	– [7.4]
CO <sub>2</sub> emissions <sup>2</sup> in g/km, combined [automatic transmission]	138–133 [135–131]	138–134 [135–131]	145–142 [140–134]	– [155–152]	– [172]
Emission class <sup>3</sup> /efficiency class <sup>4</sup> [automatic transmission]	Euro 6/C [Euro 6/B]	Euro 6/C [Euro 6/B]	Euro 6/C [Euro 6/B]	– [Euro 6/C]	– [Euro 6/D]
Tank capacity, of which reserve, approx. in l	50/6.0	50/6.0	50/6.0	56/6.0	56/8.0
Boot capacity	421–1235	421–1235	421–1235	421–1235	421–1235
Turning circle diameter in m	11.84	11.84	11.84	11.84	11.84
Kerb weight <sup>5</sup> in kg [automatic transmission]	1395 [1435]	1395 [1435]	1435 [1460]	– [1505]	– [1585]
Perm. GVW in kg [automatic transmission]	1920 [1920]	1920 [1920]	1945 [1945]	– [1990]	– [2105]

emissions, taking account of the vehicle mass. <sup>5</sup> Figures for kerb weight in accordance with Directive 92/21/EC in the currently applicable version (kerb weight with fuel tank 90 percent full, with driver, 68 kilograms, and luggage, 7 kilograms) for standard-specification vehicles. Optional extras and accessories will generally increase this figure and reduce the payload capacity accordingly. Further technical data can be found at [www.mercedes-benz.com](http://www.mercedes-benz.com)

# Upholstery and trim

## Upholstery

- 021 Coari fabric in black
- 028 Coari fabric in crystal grey
- 105 ARTICO<sup>1</sup> man-made leather in sahara beige
- 111 ARTICO<sup>1</sup> man-made leather in black
- 118 ARTICO<sup>1</sup> man-made leather in crystal grey
- 361 ARTICO man-made leather/Corumba fabric in black
- 368 ARTICO man-made leather/Corumba fabric in crystal grey
- 601 ARTICO man-made leather/Dourados fabric in black
- 604 ARTICO man-made leather/Dourados fabric in tundra brown
- 605 ARTICO man-made leather/Dourados fabric in sahara beige
- 651 ARTICO man-made leather/DINAMICA microfibre in black
- 801 Leather, black
- 804 Leather, nut brown
- 855 Leather, sahara beige/black
- 811 Leather, black RED CUT

## Trim

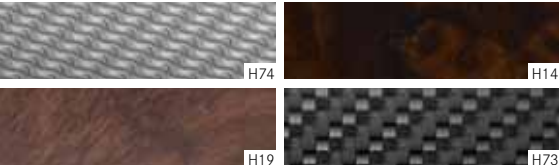
- H14 High-gloss brown burr walnut<sup>1</sup>
- H19 Satin-finish light brown poplar wood<sup>1</sup>
- H50 Wave look, silver
- H51 Wave look, anthracite
- H73 AMG carbon fibre<sup>1</sup>
- H74 Carbon fibre structure trim
- H79 Light longitudinal-grain aluminium<sup>1</sup>
- H92 AMG DINAMICA microfibre, black

<sup>1</sup> Optional extra.

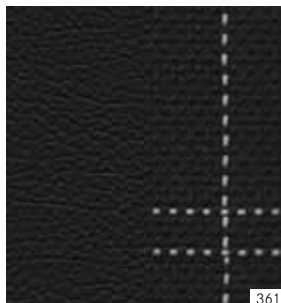
Standard equipment



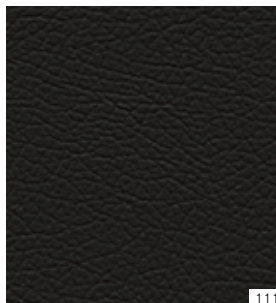
Style<sup>1</sup>



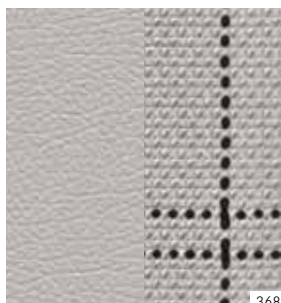
Urban¹



361



111



368



118



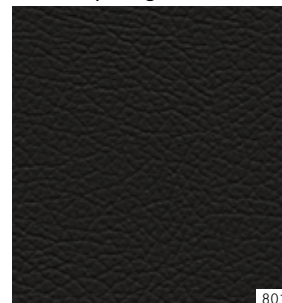
105

AMG Line¹



651

Exclusive package¹

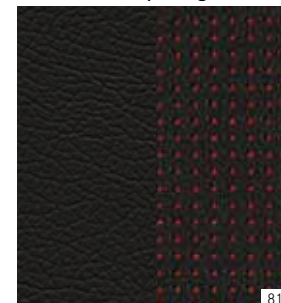


801



804

AMG Exclusive package¹



811



H50



H79



H51



H73



H92



H79



H73



855



H19



H14



H79



H73



H79

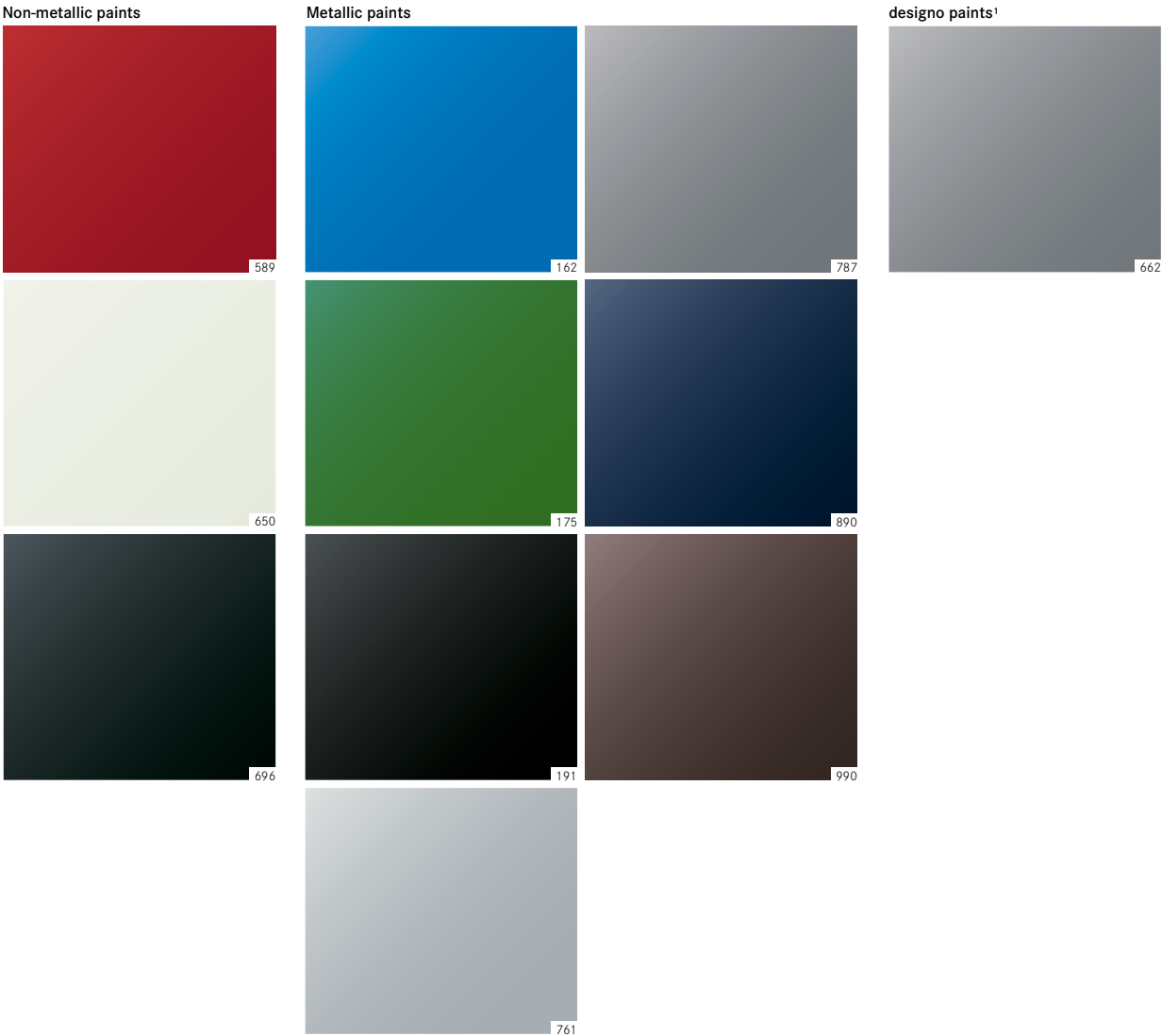


H73

# Paintwork

Non-metallic paints	
589	jupiter red
650	cirrus white
696	night black
Metallic paints	
162	south seas blue
175	elbaite green
191	cosmos black
761	polar silver
787	mountain grey
890	cavansite blue
990	orient brown
designo paints <sup>1</sup>	
662	designo mountain grey magno

<sup>1</sup> Optional extra.



# Mercedes Me

Welcome to your Mercedes-Benz world.

Imagine if ...you could connect with your Mercedes-Benz? With Mercedes connect me, you can! Mercedes connect me offers you new connectivity services that make driving more comfortable and incorporates your car into your personal lifestyle.

## Standard Services

- Maintenance Management
- Telediagnosics
- Breakdown Management
- Accident Recovery
- Mercedes-Benz Emergency Call System

## Remote Online Services<sup>1</sup>

- Remote Retrieval of Vehicle Status (fuel level, tyre pressure etc.)
- Parked Vehicle Locator
- Vehicle Tracker
- Programming of optional Auxiliary Heating<sup>2</sup>
- Geofencing
- Door lock / unlock function

<sup>1</sup> Can be used with Remote Online special feature.

<sup>2</sup> This service is only available for C-Class and S-Class vehicles





Getting connected is easy. Just set up your Mercedes Me account and get in touch with your Mercedes-Benz dealer to connect your vehicle to your profile to access your Mercedes connect me services.


Contact your dealer to get connected, or go to [www.mercedes.me](http://www.mercedes.me) for more details.



Follow us on the following social media channels:

 [facebook.com/MercedesBenzIreland](https://facebook.com/MercedesBenzIreland)

 [twitter.com/MB\\_Ireland](https://twitter.com/MB_Ireland)

 [pinterest.com/mercedesbenzire](https://pinterest.com/mercedesbenzire)

Motor Distributors Ltd.  
Naas Road  
Dublin 12  
Ireland  
[www.mercedes-benz.ie](http://www.mercedes-benz.ie)

Information correct at time of going to print. Prices and specifications are subject to change without prior notice. Prices quoted do not include dealer and delivery related charges. Images are for illustrative purposes only, actual product may vary. For more specific information in relation to the range of models, features, optional extras, colours and services available please speak to your local authorised Mercedes-Benz dealer.